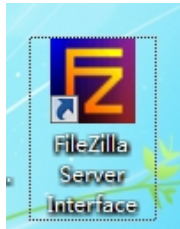


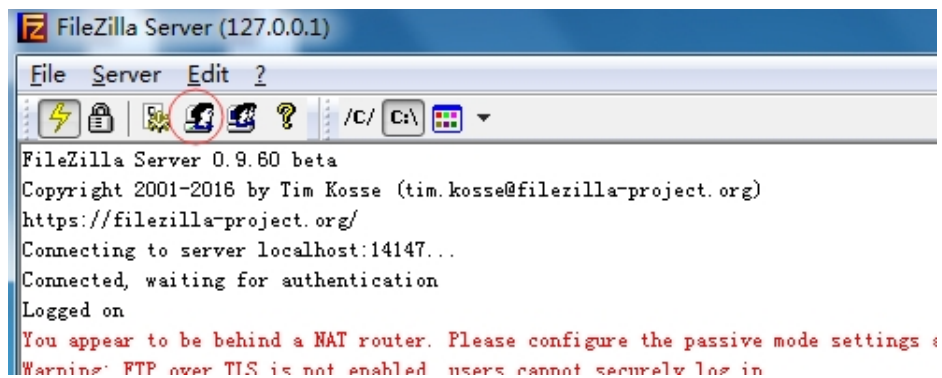
FTP- User Manual

1. Take a free FTP Server for example-FileZilla Server Interface(If you have your own FTP server, you can skip to Step 3 directly)

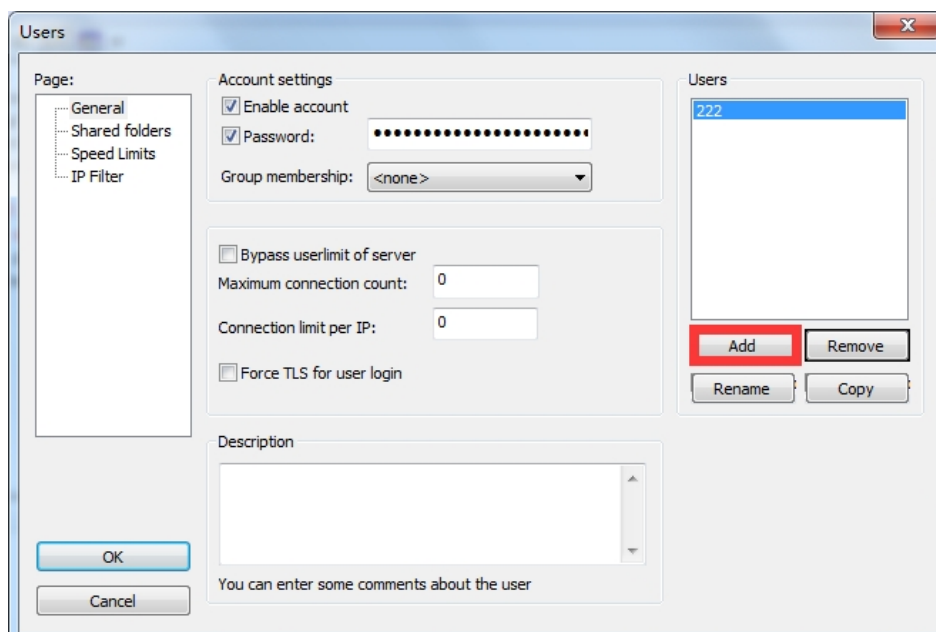
1. Download FileZilla Server Interface



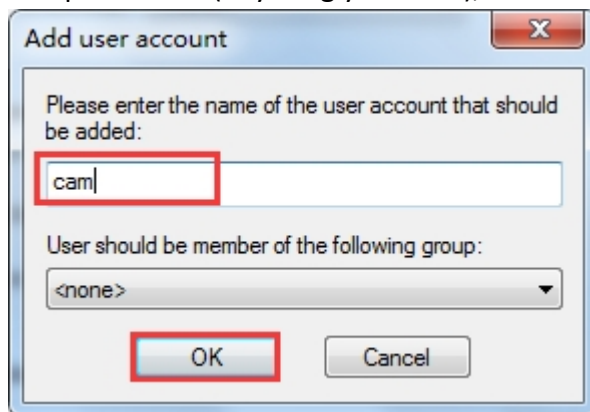
2. Click Circled red as below



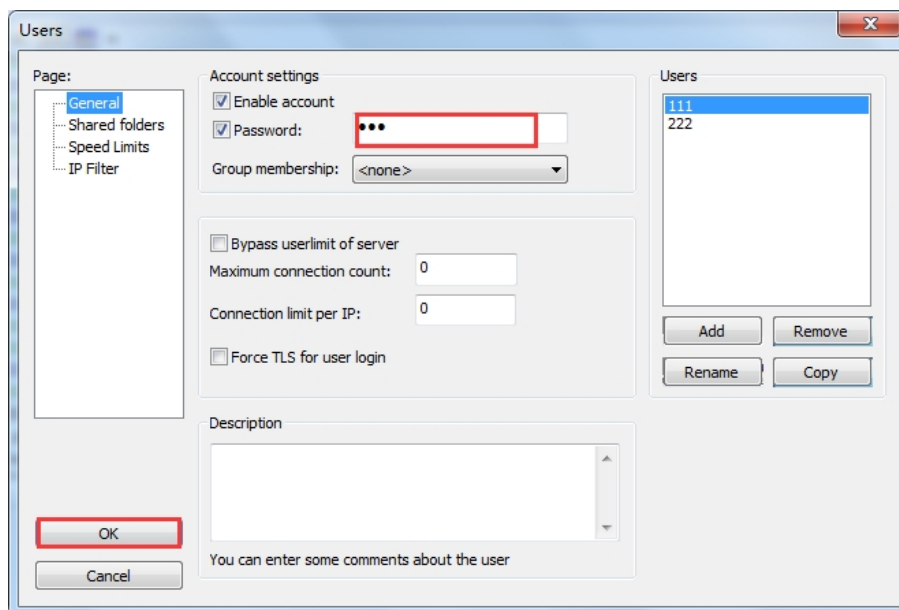
3. Click “Add”



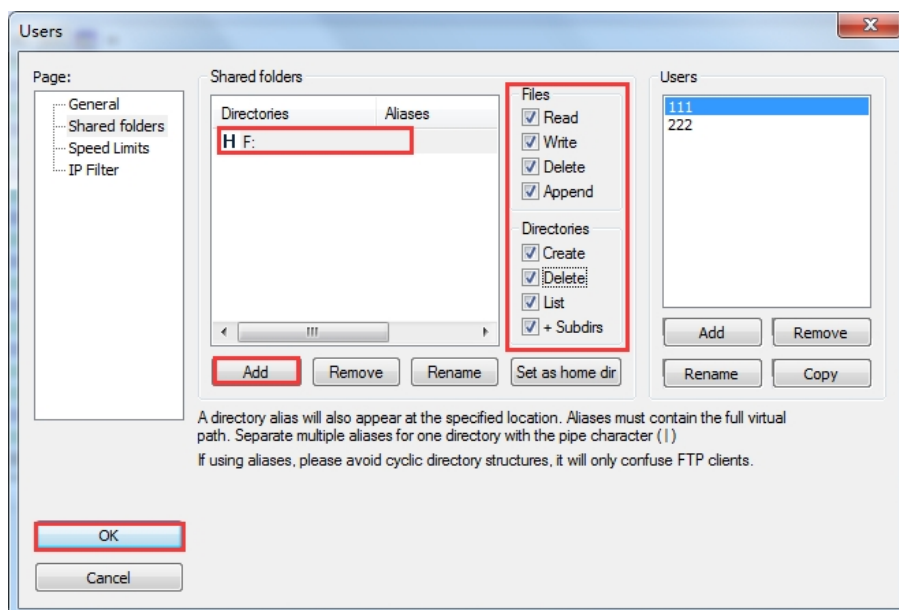
4. Input a name(anything you want), then click “ok”




5. Select “Password” and input user-defined password, then Click “ok”

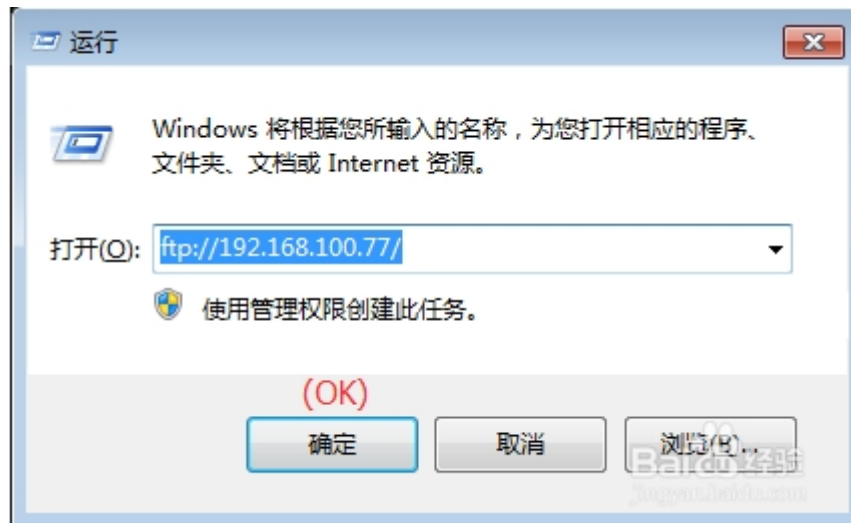


6. Click “Add” as below to add a route. Select all the options under “Files”, then click “OK”

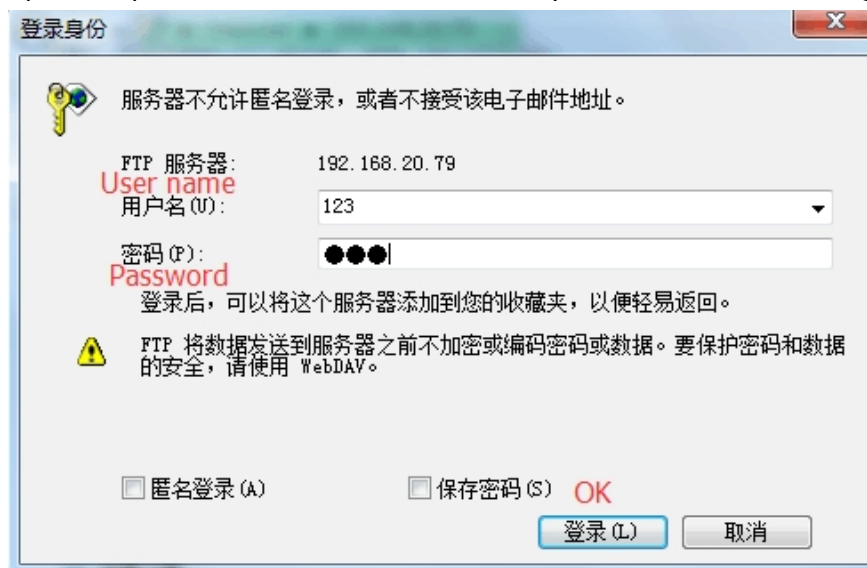


7. Test FTP

Click  + "R" on the keyboard of your PC, input ftp://*** , ***be the ip address of your PC, click "OK"



8. Then will pop out below dialogue box, input User name and password you just set up on Step 4 and 5, then click "OK", Then you should be able to log in

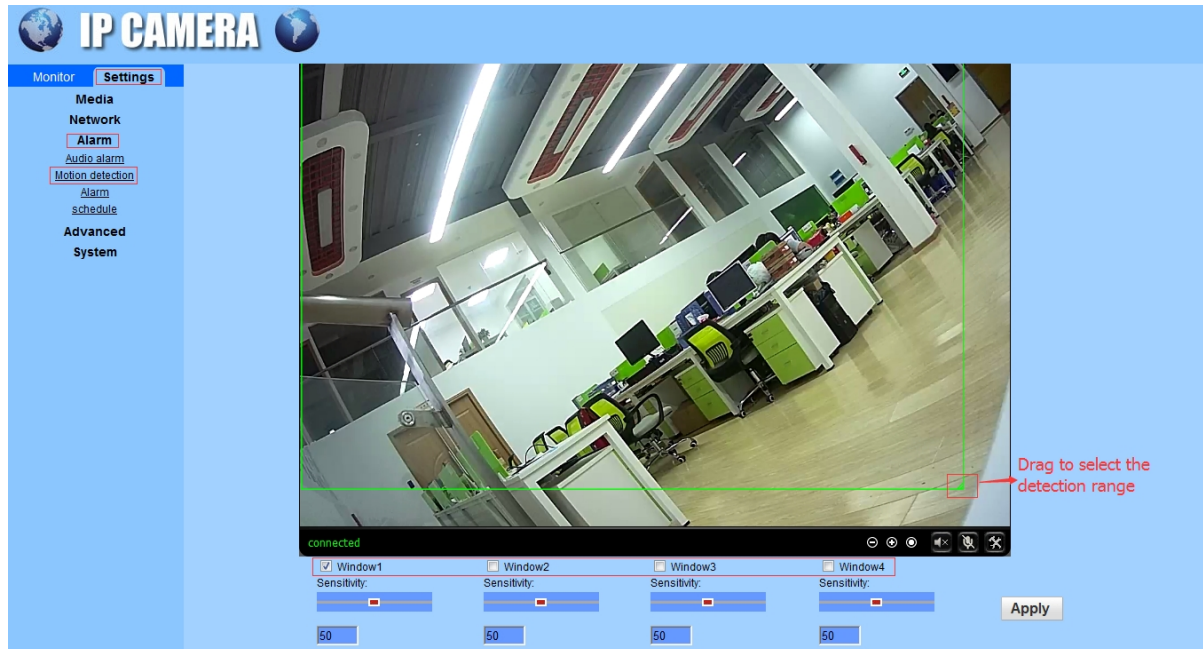


2. Set up Motion Detection(Suggest set up on IE)

Go to IE interface (For how to log into IE, you can download Search Tool User Manual)

1. Set up motion detection range (Settings → Alarm→Motion Detection)

Here you can set up motion detection range



Windows: Check window 1 and a small frame appear,drag to select the detection range.

PS: Check window 2.3.4 to combine detection areas freely

Sensitivity: Modify the motion detection sensitivity

Please click “Apply” after set it up.

3. FTP (IE→Settings→Alarm→Alarm→FTP server settings)

Before set up FTP, please ensure you have activated FTP upload function on Motion Detection.

The option “Save videos on the FTP Server” takes effect only when SD card is inserted and the option “Save video on the SD card” is checked.

Monitor Settings

Media

Network

Alarm

Audio alarm

Motion detection

Alarm

schedule

Advanced

System

Linkage set

☐ E-mail Alarm and Send with Picture [Email Setting](#)

☒ Save Picture on the FTP Server [FTP Server Setting](#)

☒ Save Video on the FTP Server

☐ Save Picture on the SD Card

☒ Save Video on the SD card

☐ Linkage preset 1

Image capture

Image capture number: 3

Apply Cancel

FTP

Server Address: 192.168.20.99

Server Port: 21

User name: long

Password:

Passive mode: ☒ On ☐ Off

Path: /

Auto create dir: ☒ On ☐ Off

Test FTP settings: Please set first, and then test.

Apply Cancel

Server Address: Your computer IP address(Must be IP address)

Server Port: FTP default port 21

User name: User name you just set up on Step 4

Password: Password you just set up on Step 5

Path: Default path, no need to change

Auto create dir: Default on

Please click “**Apply**” first after setting, and then click “**Test**” to check if you set up succeed.If not, please exit your firewall and test again.